

STATIONARY SCISSOR LIFT TABLE

Perimeter of pit floor must be kept level.

- **E Deck Width** plus 2" (50mm)
Additional 1" (25mm) for each lip on side "B" or "D"
- **F Deck Length** plus 2" (50mm)
Additional 1" (25mm) for each lip on side "A" or "C"
- **G Lowered Height** + 0.25" - 0" (+ 6mm - 0)

POWER AND CONTROL ARRANGEMENTS:

Metro Dock to supply elevating dock, power pack and push button station only. All interior connecting conduit(s), wiring, disconnect and connection to power supply by others in compliance with local codes.

POWER AND CONTROL CONDUITS:

Remote power pack and push button - Provide one 1.5" (40mm) conduit for hydraulic hose.

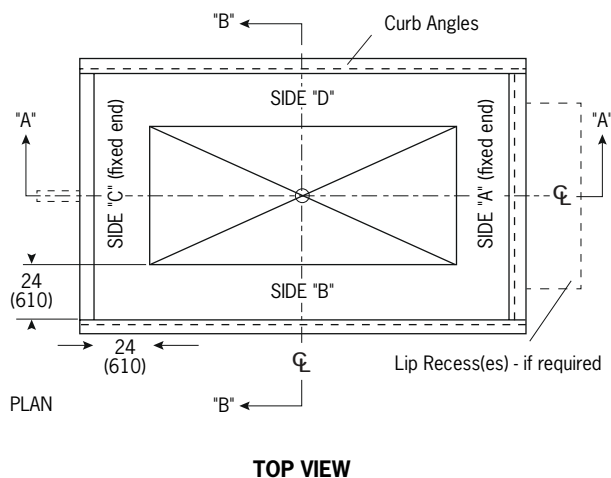
Remote power pack, up limit switch and/or safety trip bars - Provide one 1" (25mm) ID rigid conduit for electrical wiring and one 1.5" (40mm), 75 or 80 PSI poly or plastic pipe for hydraulic hose.

MATERIAL:

Curb angles use 3" x 3" x 0.25" (75mm x 75mm x 6mm) and anchor (Nelson studs) center distance of 24" (610mm) maximum.

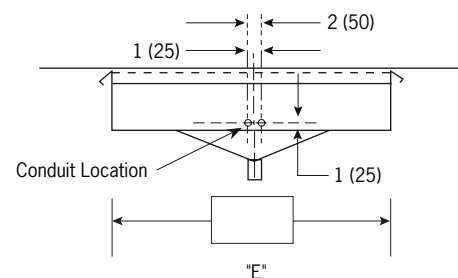
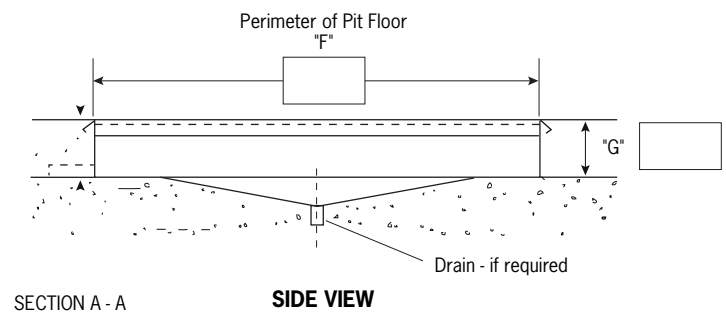
PIT MUST BE KEPT SQUARE:

Dimension tolerances $\pm 0.25"$ (6mm); unless stated otherwise.



Dimensions in. (mm)

Date:
Company:
Authorized By:
Purchase Order #
Client:
Project:
Authorized Signature:



2 Conduits - Avoid kinking, do not over bend poly or plastic pipe.

Model:
Voltage:
Lip Recess(es):
Lip Recess(es) on Side(s):

FOR INTERNAL USE ONLY

DATE RECEIVED: